

BEHIND

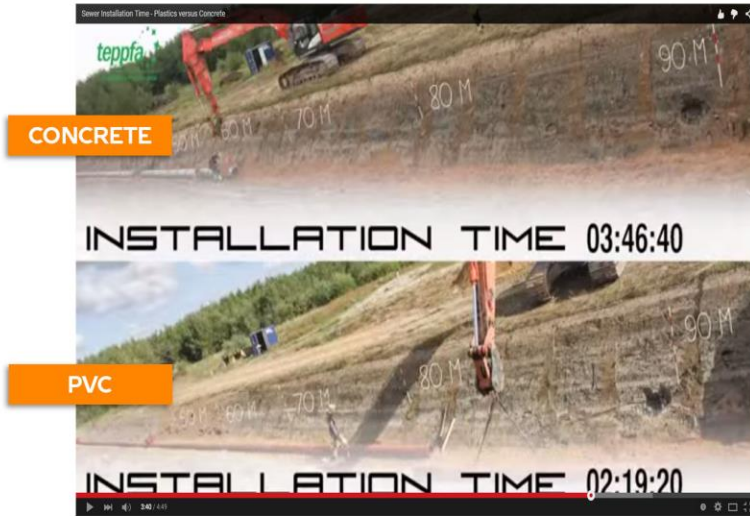
# BRILLIANCE



**NELTEX**

**SEWERGUARD 8055**

# SEWERGUARD 8055 CUTS TRAFFIC CONGESTION BY AT LEAST 30%



PVC sewer pipes are over 30% faster to install<sup>[1]</sup> and requires 10 times less maintenance compared to concrete<sup>[2]</sup>; this means using PVC sewer pipes can significantly lessen traffic associated to pipelining and sewer system repairs.

The corrosion resistant quality of PVC DWV pipes makes it the brilliant material for sewer systems compared to reinforced concrete (RC) pipes whose joint failures were found to limit its operational life<sup>[3]</sup>. This means that using SEWERGUARD 8055 can actually guarantee lesser number of days spent on stressful bumper-to-bumper traffic due to road blocking for sewer pipe maintenance.

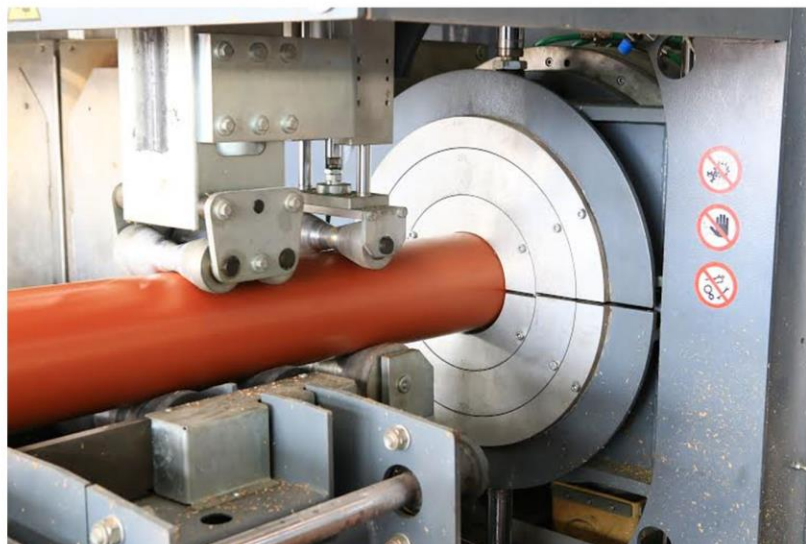
<sup>1</sup>Video and Study by TEPPFA presented findings of the Study at the recent 17th Plastic Pipes Conference, 2014, Chicago, Illinois, USA

<sup>2</sup>Based on a paper by Christopher Pratt: Factors Influencing Pipe Failures for CEED Seminar Proceedings 2011

<sup>3</sup>Based on Uni-Bell PVC Pipe Association study in North America

# SEWERGUARD 8055 W/ SEWERLOCK ENSURES LEAK-FREE SEWERS EVEN AFTER 2065

Leaking main sewer lines are probably the worst road problem of all with the pollution and health problems that come with it. Thankfully, this can also be solved with the use of NELTEX SEWERGUARD 500mm with SEWERLOCK. This brilliant product is not only the country's biggest PVC pipe to date, it is also equipped with machine-installed gasket made of Engineered Natural Rubber that is homogenously bound to stiff glass reinforced PP ring. Thus, it is guaranteed to be 100% leak-free for at least 50 years.



# NELTEX

## SEWERGUARD 8055 Behind Brilliance



**ONE (1) SEWERGUARD 8055  
OUTPERFORMS  
THREE (3) CONCRETE PIPES**

One Neltex Sewerguard 500 mm with Sewerlock can drain floodwater faster than 3 concrete pipes of the same size. This is due to PVC's smoother internal surface, lesser number of jointing, better sloping capacity, and resistance to both Hydrogen Sulfide and Biogenic Sulfuric Acid corrosion. Using Manning's equation for flow velocity calculation, Neltex SEWERGUARD 500 mm with Sewerlock can outperform three concrete pipes in terms of storm water flow velocity.



SEWERGUARD 8055 with Sewerlock comes with machine-installed gasket made of Engineered Natural Rubber that is homogenously bound to stiff glass reinforced PP ring for 100% leak-free jointing

## SEWERGUARD 8055 Specifications

<b>Sewer Pipes</b>	Conform to ISO 4435 80 Joules Izod Impact and 55 MPa Tensile Strength
<b>Sewer Fittings</b>	Conform to ISO 4435 and ASTM D3311
<b>Composition</b>	Made with 90% K65 Resin by Mass
<b>Jointing</b>	<b>Gasket Type:</b> Machine-Installed Sewerlock (Fixed Seal Socket) Gaskets to be made of Engineered Natural Rubber homogenously bonded to a stiff PP ring <b>Socket Type:</b> Use only Neltex PVC Pipe cement
<b>Toxicity</b>	Pipes to be Heavy Metal-Free (HMF) as validated through Inductively Coupled Plasma Optical Emission Spectrometry (ICP OES) method. (Mercury, Cadmium, Tin & Lead must not be present)
<b>Markings</b>	Pipes to be marked using Continuous Ink Jet (CIJ) Printing Method With traceability codes

SEWERGUARD PIPES		
SDR 34		
ND	DN	Min. Pipe Thickness
6"	160 mm	4.7mm
8"	200 mm	5.9 mm
10"	250 mm	7.3 mm
12"	315 mm	9.2 mm
16"	400 mm	11.7 mm
18"	450 mm	13.2 mm
20"	500 mm	14.6 mm

SDR 51		
ND	DN	Min. Pipe Thickness
6"	160 mm	3.2 mm
8"	200 mm	3.9mm
10"	250 mm	4.9 mm
12"	315 mm	6.2 mm
16"	400 mm	7.9 mm
18"	450 mm	8.8 mm
20"	500 mm	9.8 mm

SEWERGUARD FITTINGS	
SEWERGUARD 8055 THERMOFORM FITTINGS	
WYE & TEE	
ND	DN
12 x 12"	315 mm x 315 mm
12 x 10"	315 mm x 250 mm
12 x 8"	315 mm X 200 mm
12 x 6"	315 mm x 160 mm
12 x 4"	315 mm x 107 mm
12 x 3"	315 mm X 82 mm
12 x 2"	315 mm X 57 mm
10 x 10"	250 mm x 250 mm
10 x 8"	250 mm x 200 mm
10 x 6"	250 mm x 160 mm
10 x 4"	250 mm x 107 mm
10 x 3"	250 mm x 82 mm
10 x 2"	250 mm x 57 mm

SEWERGUARD 8055 MOULDED FITTINGS	
WYE & TEE	
ND	DN
6 x 4"	160 mm x 107mm
6 x 6"	160 mm x 160mm
8 x 6"	200 mm x 160mm
8 x 8"	200mm x 200mm

MOULDED DOUBLE WYE	
ND	DN
6 x 4"	160 mm x 107mm
6 x 6"	160 mm x 160mm
8 x 6"	200 mm x 160mm
8 x 8"	200 mm x 200mm

SEWERGUARD ELBOW	
SINGLE / DOUBLE HUB	
ND	DN
6 x 90"	160 mm x 90mm
8 x 90"	200 mm x 90mm
6 x 45"	160 mm x 45mm
8 x 45"	200 mm x 45mm



For over 5 decades now, Neltex has been the preferred and trusted brand for total piping solutions. With its commitment to constant innovation and sustainable construction that makes it the gold standard for quality and project specifications, and now with Asia's biggest Lead-Free PVC Manufacturing plant (producing 30,000 MT annually), Neltex continues to be the PVC Pipe brand behind brilliance in construction.

